

Date: _____

For: File Resubmit
 Approval Other _____

PO No.: _____

Architect: _____

GC: _____

Engr: _____

Mech: _____

Rep: _____

(Company)

(Project Manager)

LH367HV
 Single Zone High Static Duct
 Outdoor Unit (ODU) - LUU367 Indoor Unit (IDU) - LHN367HV



PQRCVCLOQW



Performance:

Cooling:

Capacity (Btu/h)	36,000
SEER	17.60
EER	12.1

SEER - Seasonal Energy Efficiency Ratio EER - Energy Efficiency Ratio

Heating:

Capacity (Btu/h)	40,000
HSPF	9.20

HSPF - Heating Seasonal Performance Factor

Cooling Nominal Test Conditions: Heating Nominal Test Conditions:

Indoor: 80°F DB/67°F WB
 Outdoor: 95°F DB/75°F WB

Indoor: 70°F DB/60°F WB
 Outdoor: 47°F DB/43°F WB

Electrical:

Power Supply (V ¹ /Hz/Ø)	208-230/60/1
MOP (A)	40
MCA (A)	24.5
Cooling Rated Amps (A)	20.8
Heating Rated Amps (A)	21.4
Compressor (A)	18.6
Fan Motor (A)	1.2
Cooling Power Input (kW)	2.91
Heating Power Input (kW)	3.36

MOP - Maximum Overcurrent Protection MCA - Minimum Circuit Ampacity

Piping:

Liquid Line (in, OD)	3/8
Vapor Line (in, OD)	5/8
Additional Refrigerant (oz/ft)	0.43
Max Pipe Length (ft) ²	246
Pipe Length (no add'l Refrigerant, ft)	25
Max Elevation (ft)	98

Features:

- ESP control
- Hot start
- Inverter (variable speed fan)
- Internal condensate pump
- Auto restart
- Control lock function
- Group control
- Timer (on/off)
- Sleep mode

Included Accessories:

- Simple Controller with Mode (White) - PQRCVCLOQW

Optional Accessories (sold separately)

- LG Programmable Controller - PREMTB10U
- Dry Contact Unit Dry Contact Unit (1 contact, 24 VAC external power) - PQDSB1
- AC Ez - PQCSZ250S0

Operating Range:

Outdoor Unit:

Cooling (°F DB)	5-118
Heating (°F WB)	0-64

Indoor Unit:

Cooling (°F WB)	57-77
IDU Heating (°F DB)	59-81

Unit Data:

Refrigerant Type	R410A
Refrigerant Control	EEV
Refrigerant Charge (lbs)	7.4
ODU Sound Pressure Max (Cool/Heat) ±3 dB(A) ³	52/54
IDU Sound Pressure (H/M/L) ±3 dB(A) ³	39/38/37
ODU Net Weight (lbs)	203
ODU Shipping Weight (lbs)	227
IDU Net Weight (lbs)	125
IDU Shipping Weight (lbs)	139

Fan:

ODU Type	Propeller
IDU Type	Sirocco
Fan Speeds (Fan/Cooling/Heating)	3/3/3
Fan Quantity (ODU + IDU)	2 + 1
Motor/Drive	Brushless Digitally Controlled/Direct
ODU Air Circulation (CFM)	1,942 x 2
IDU Air Circulation H/M/L (CFM)	1,130/953/706
Max External Static Pressure (in wg)	0.39
Dehumidification Rate (pts/hr)	10.6

Notes:

1. Acceptable operating voltage: 187V-253V.
2. Piping lengths are equivalent.
3. Sound Pressure levels are tested in an anechoic chamber under ISO Standard 1996.
4. All communication/power cable to be minimum 18 American wire gauge (AWG), 4-conductor, stranded, shielded and must comply with applicable local and national code.
5. See Engineering Manual for sensible and latent capacities.
6. Power wiring cable size must comply with the applicable local and national code.
7. The indoor unit comes with a dry helium charge.
8. This data is rated 0 ft above sea level, with 25 ft of refrigerant line and a 0 ft level difference between outdoor and indoor units.
9. Must follow installation instructions in the applicable LG installation manual.



Outdoor Unit (ODU) - LUU367HV

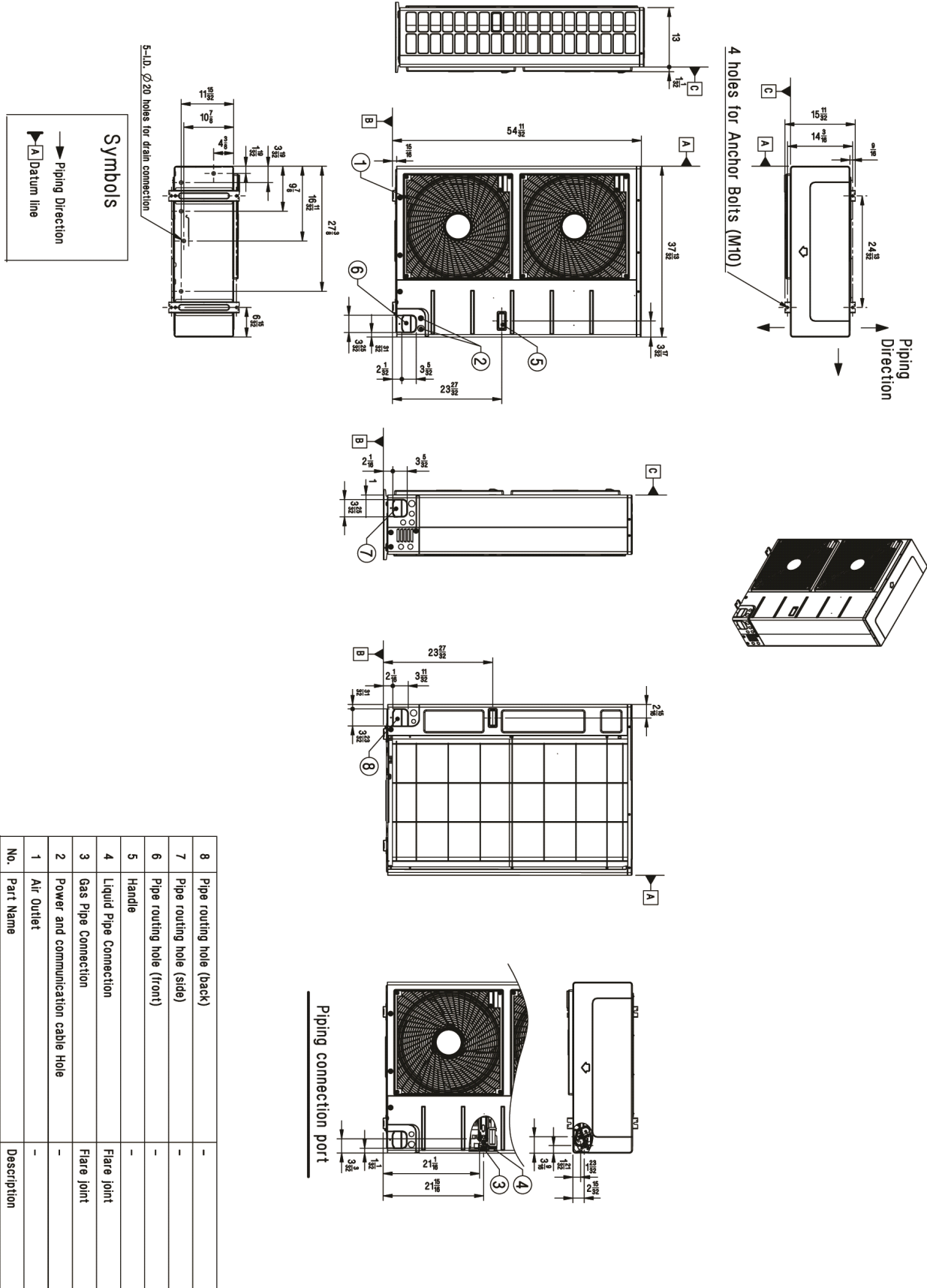
Single Zone High Static Duct



Tag #:

Date:

PO No.:



Indoor Unit (IDU) - LHN367HV

Single Zone High Static Duct

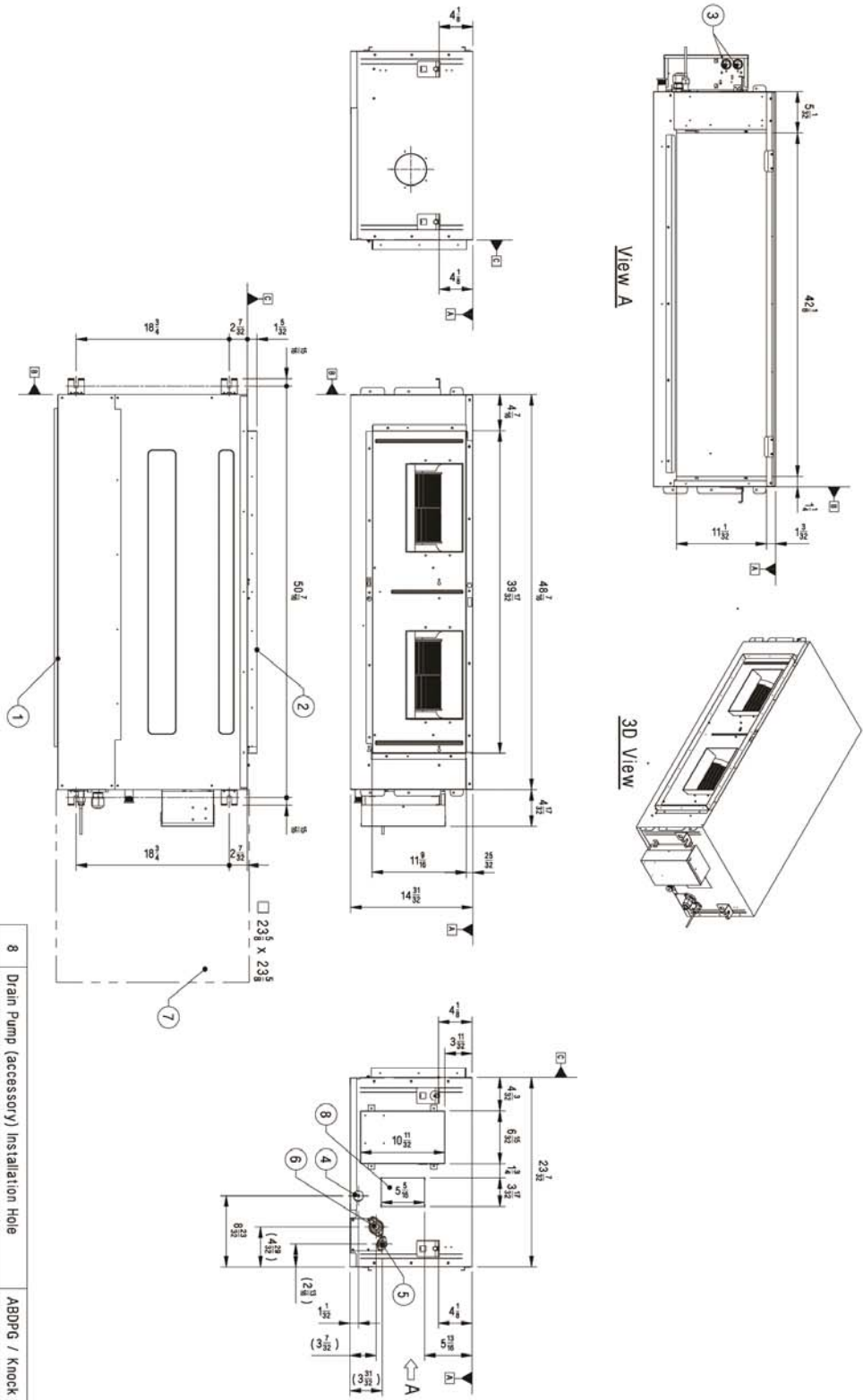
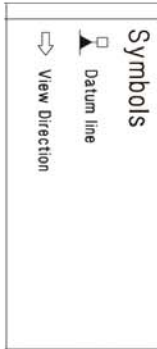


Tag #:

Date:

PO No.:

[Unit: inch]



No.	Part Name	Description
8	Drain Pump (accessory) Installation Hole	ABDPg / Knock out Type
7	Inspection Hole	-
6	Gas Pipe Connection	-
5	Liquid Pipe Connection	-
4	Drain Pipe Connection	-
3	Power and Communication cable Hole & Wired Remote Controller Wire Routing Hole	-
2	Air Outlet	-
1	Air Intake	-